

A dark grey map of the Czech Republic is centered on a black background. Numerous small red dots are scattered across the map, representing the locations of biotopes. The text is overlaid on the map.

# Modelování potenciální distribuce biotopů ČR 2: predikce a realita

Tomáš Kučera

*Ústav ekologie krajiny AV ČR*

*<http://www.uek.cas.cz/people/kucera>*



# **Mapping for Red Data Books in the Czech Republic**

**Evaluating of vegetation and environmental diversity in landscape level:**

**Connecting releve database with environmental maps in GIS Idrisi**

**Tomas Kucera, Darwin Fellow  
Foresta SG, Prague**

**in collaboration with**

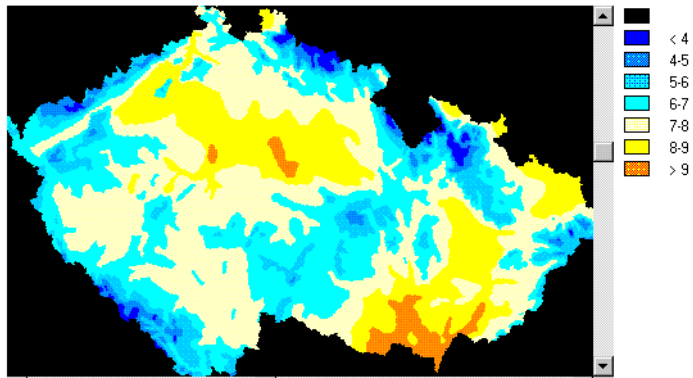
**Milan Chytry  
Masaryk University, Brno**

**Julian Dring & John Rodwell  
Unit of Vegetation Science  
Lancaster University**

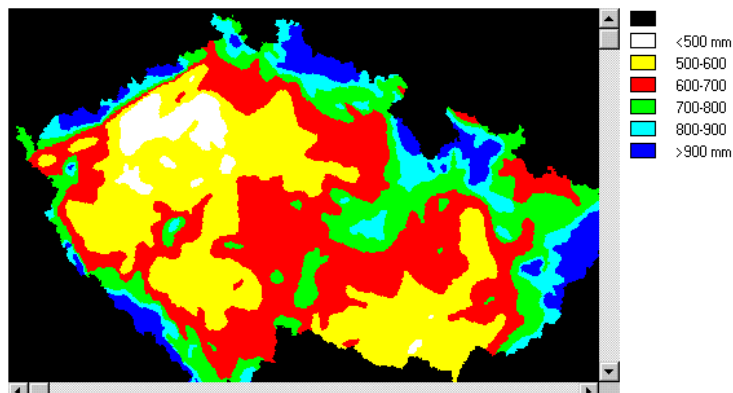
**March 1998**

**Unit of Vegetation Science  
Lancaster University  
United Kingdom**

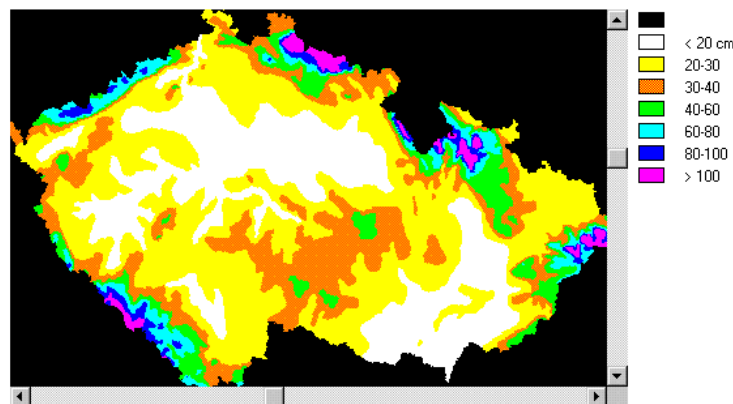
## Mean annual temperatures



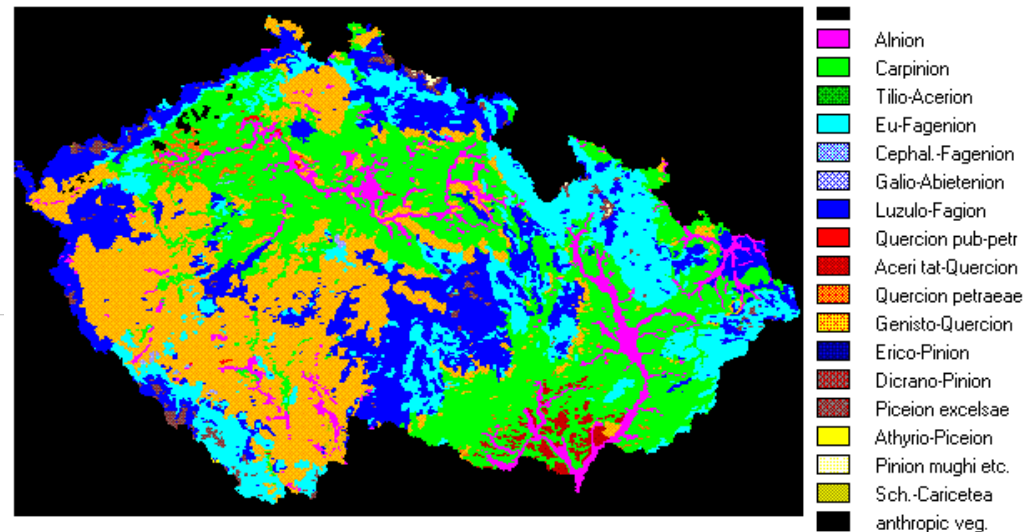
## Precipitation



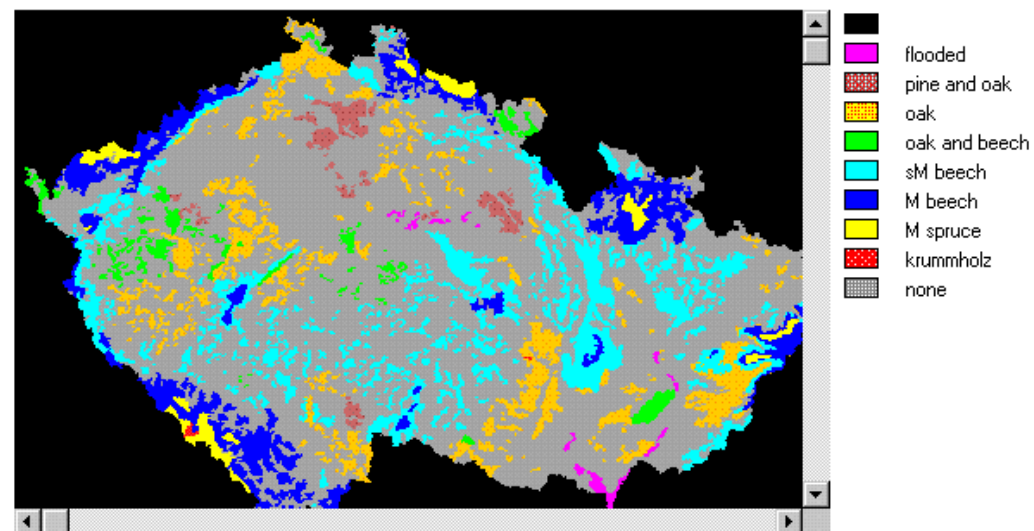
## Snow depth



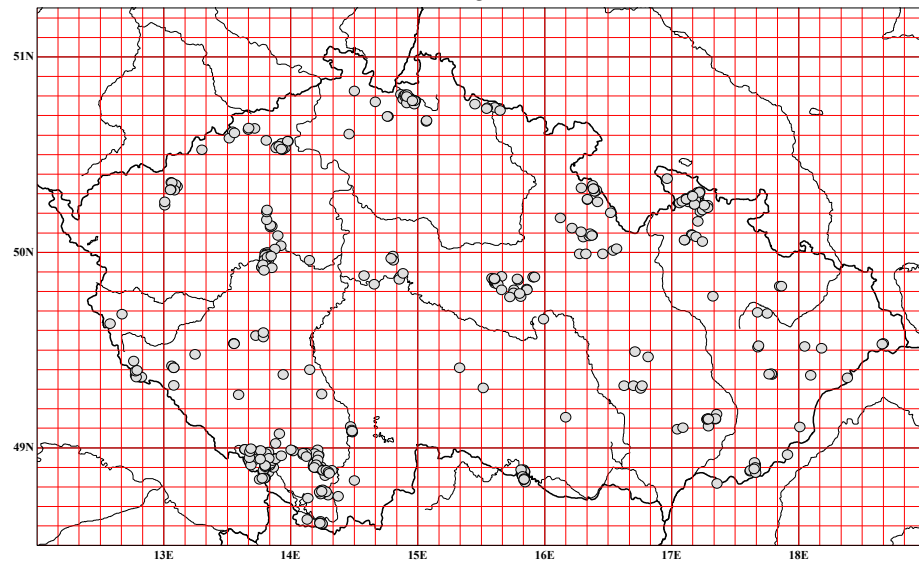
## Potential vegetation



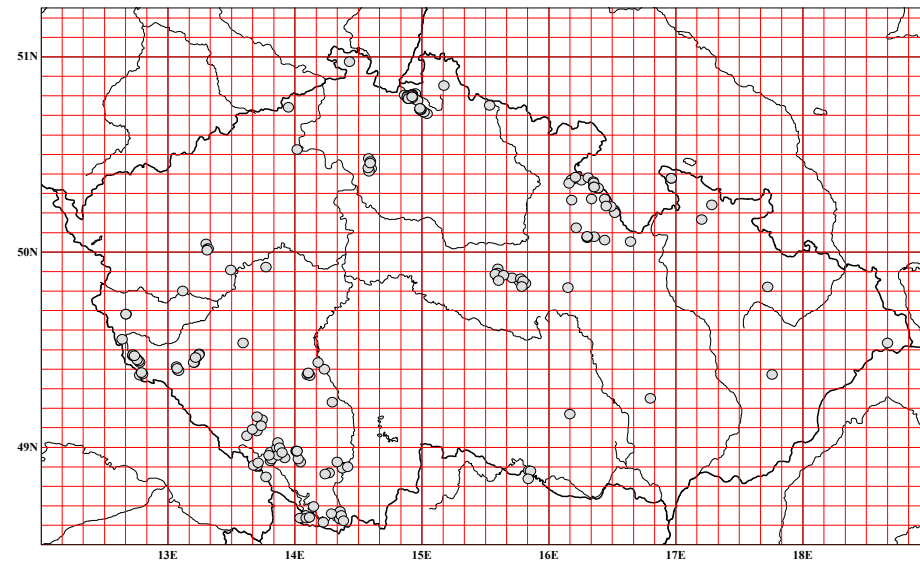
## Forest zones



Fagion



Luzulo-Fagion



IMPORT: XYZIDRIS

POINTRAS

CONVERT

*Fagion, Eu-Fagenion*

		No of releves
TpF	Tilio platyphylli-Fagetum	11
TcF	Tilio cordatae-Fagetum	41
MF	Melico-Fagetum	12
CpF	Carici pilosae-Fagetum	27
DeF	Dentario enneaphyllidi-Fagetum	106
DgF	Dentario glandulosae-Fagetum	3
MaF	Melico altissimae-Fagetum	50
VrF	Violo reichenbachiana-Fagetum	13

*Aceri-Fagenion*

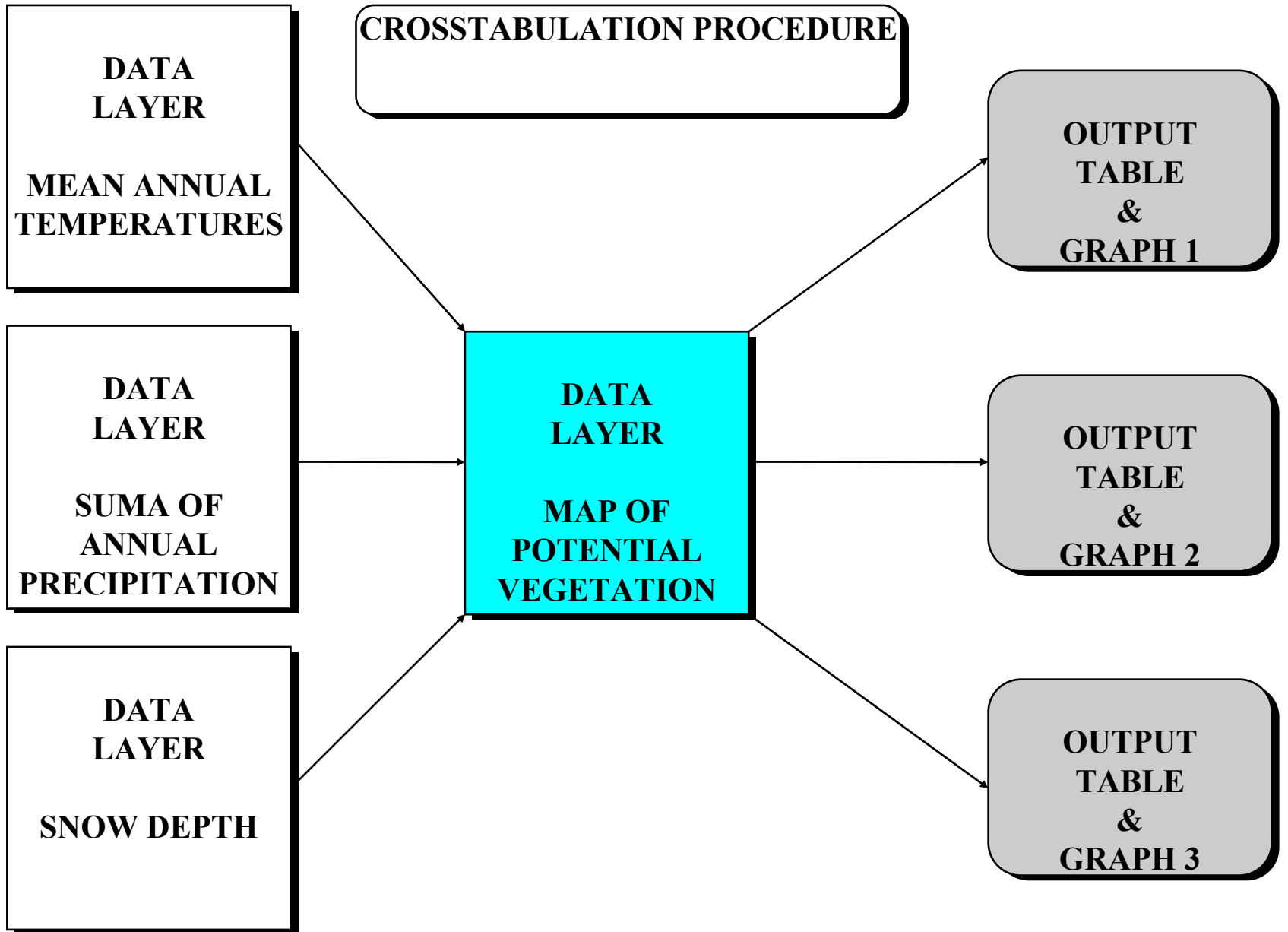
AF	Aceri-Fagetum	8
----	---------------	---

*Cephalanthero-Fagenion*

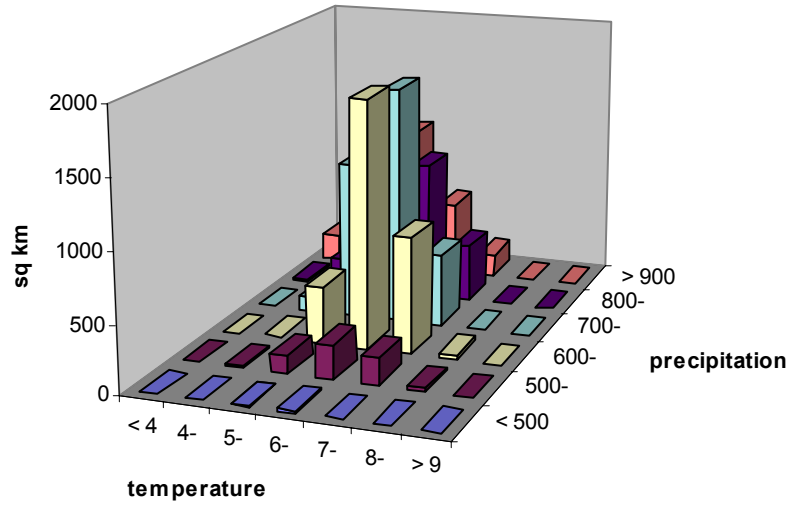
CF	Cephalanthero-Fagetum	18
----	-----------------------	----

*Luzulo-Fagion*

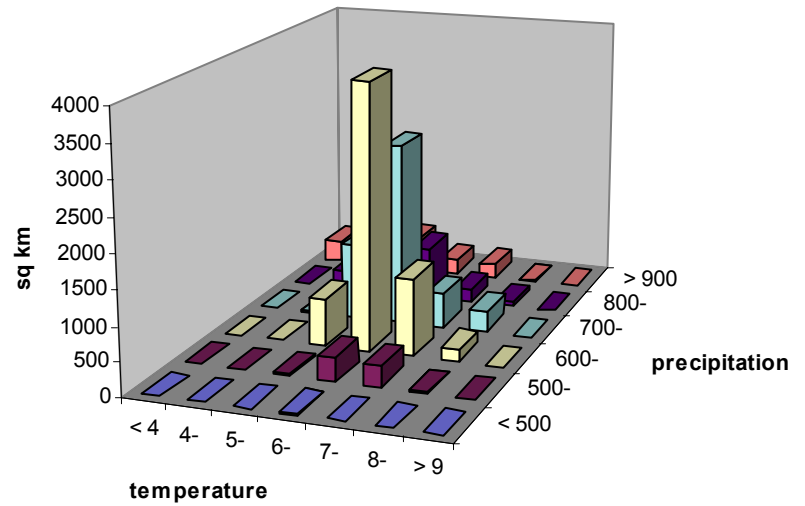
LF	Luzulo-Fagetum	69
CvF	Calamagrostio villosae-Fagetum	53 releves



### Eu-Fagenion



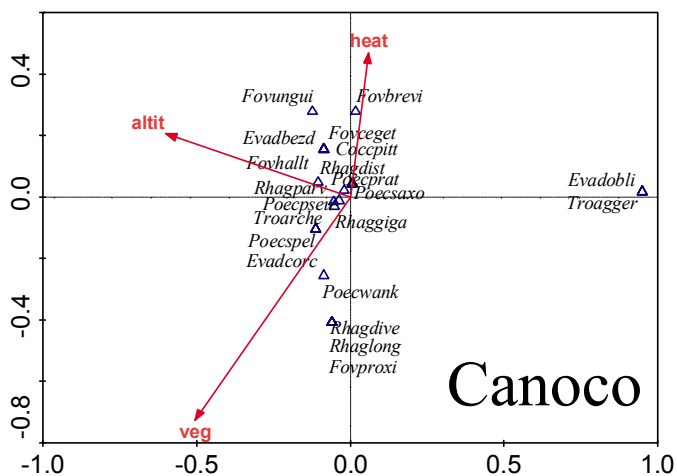
### Luzulo-Fagion



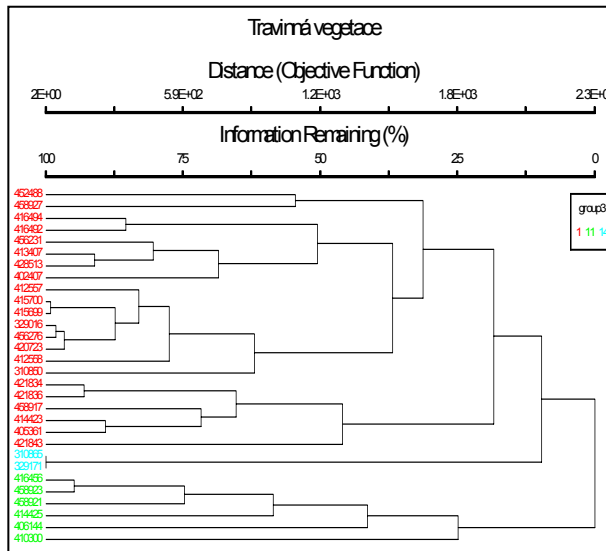
# Česká národní fytoocenologická databáze (TurboVeg)

Vegetační data – analýza a syntéza, klasifikace, ordinace

Distribuční data – mapy, modely



## PC-ORD



# Projekt Katalogu biotopů

- Interpretace evropsky významných habitatů podle Směrnice 92/43/EEC
- Základní zdroj dat o rozšíření: Česká národní fytoocenologická databáze
- Modely potenciálního rozšíření v závislosti na faktorech prostředí

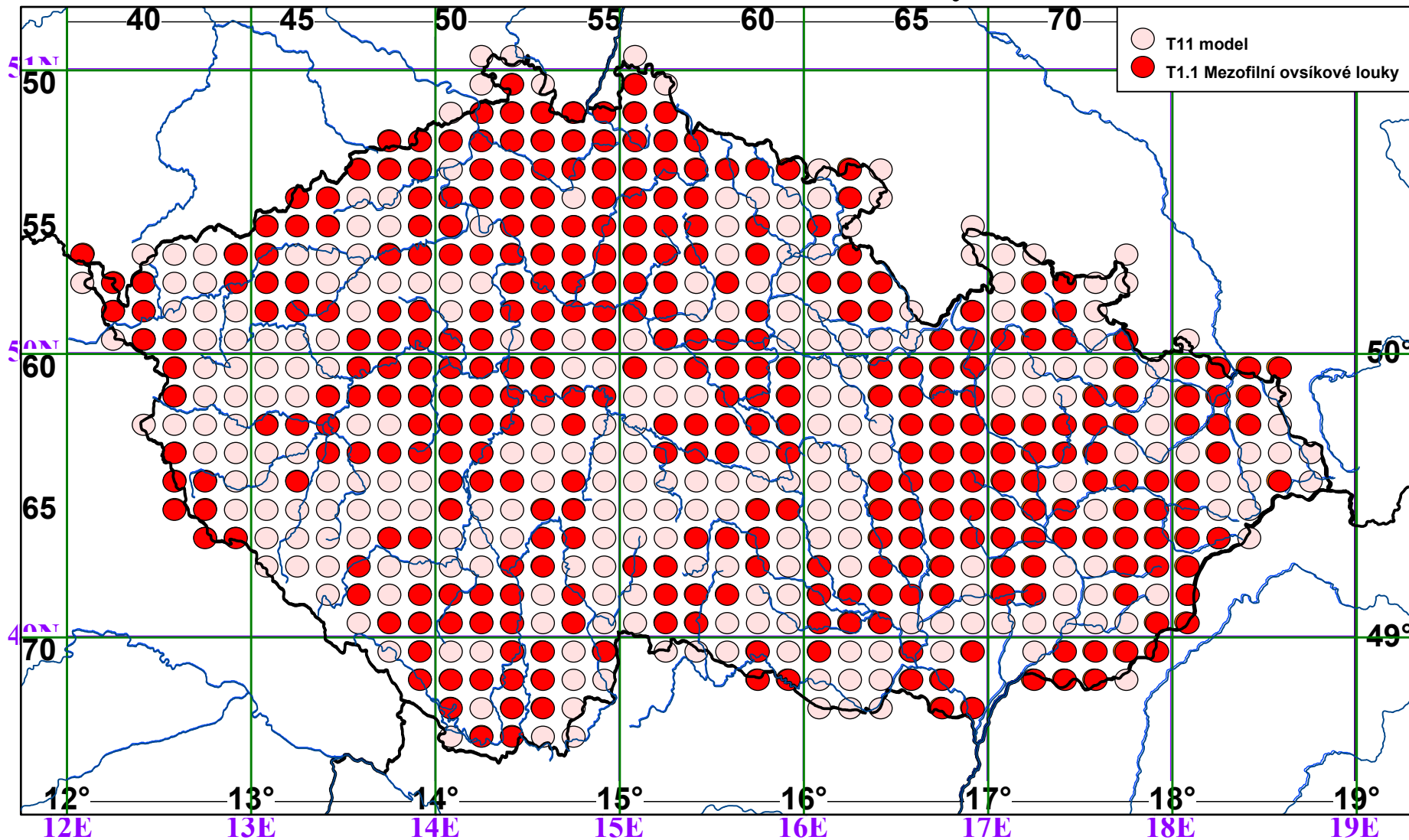


Katalog biotopů České republiky

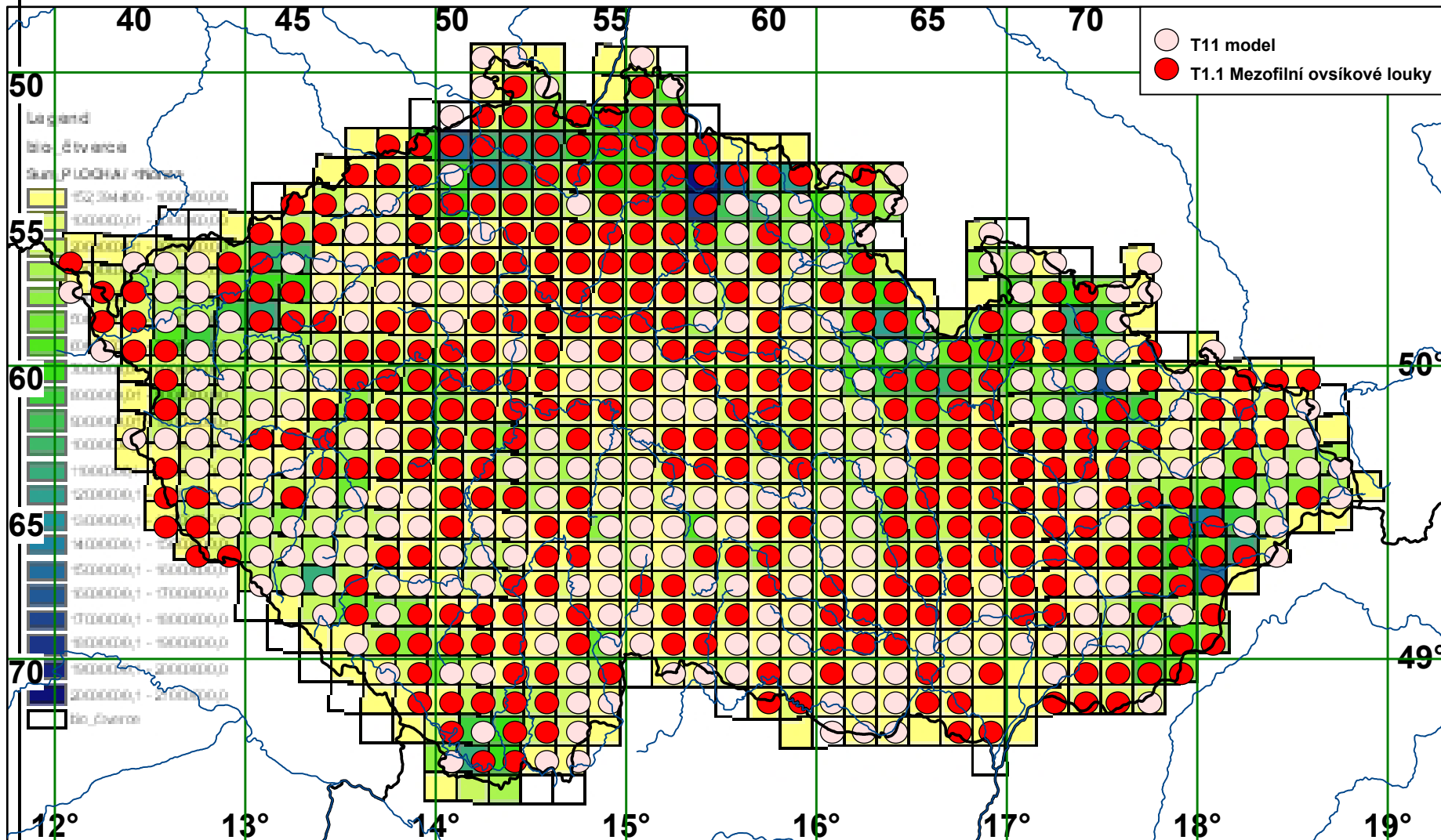
Katalog biotopů České republiky



# T1.1 MezT11model T11ové louky

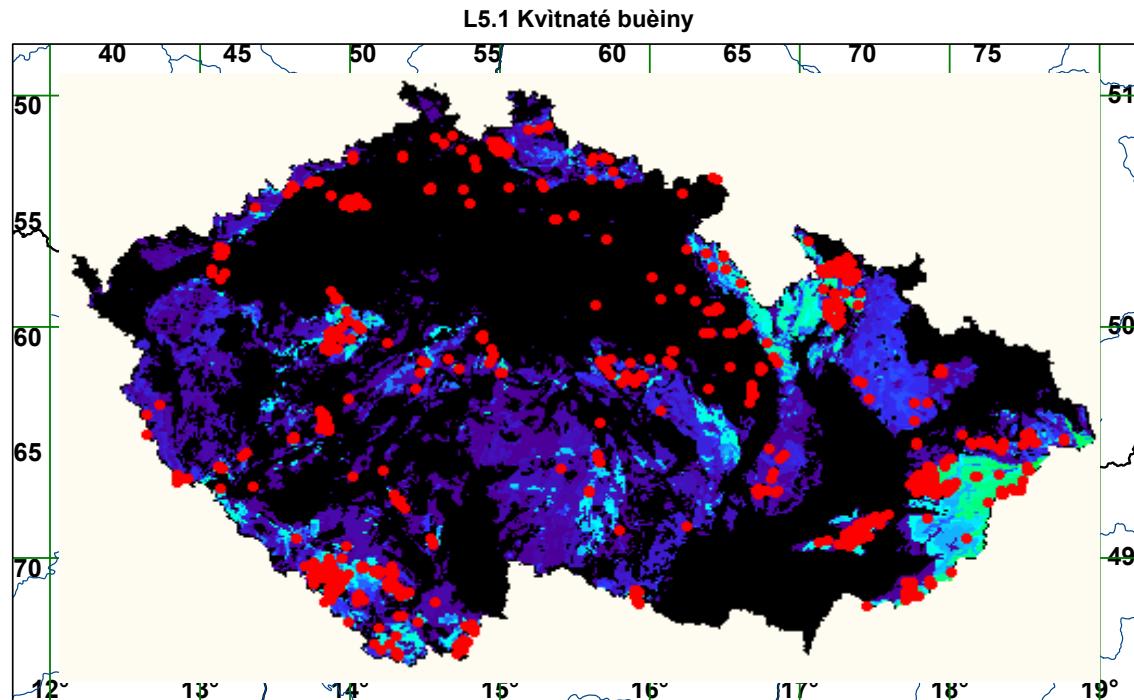


# T11model T11



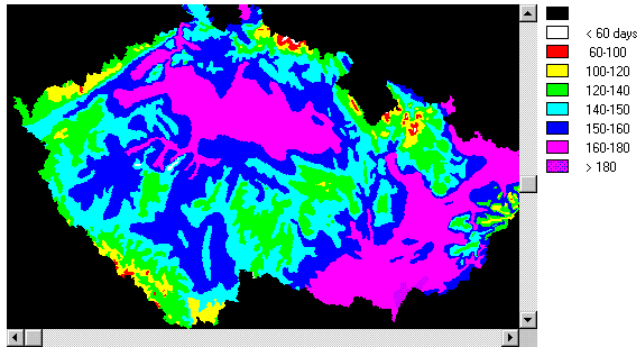
# Postup prací

- 1) Reálné rozšíření společenstva
- 2) Vyhodnocení vazby na faktory prostředí
- 3) Pravděpodobnostní model

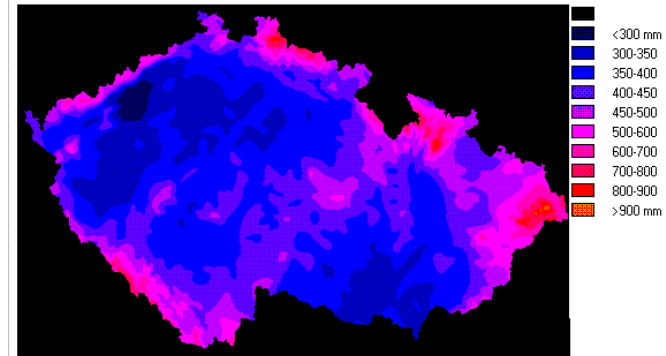


# Klimatické vrstvy - BAYES

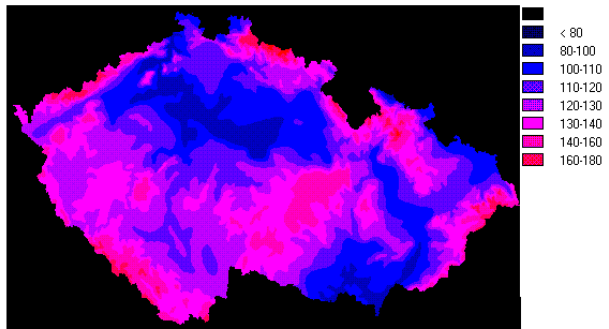
Growing season



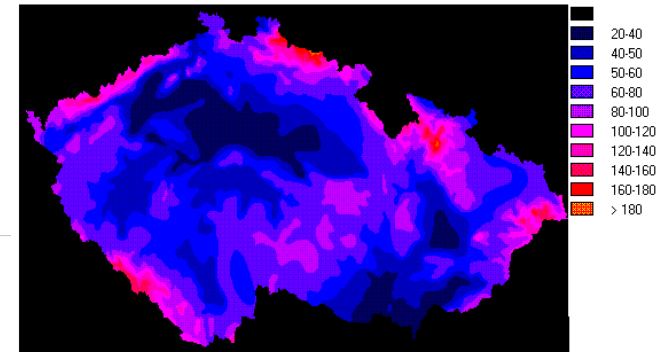
Precipitation during vegetation season



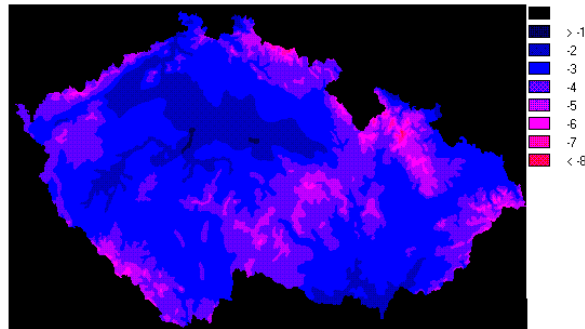
Frost period (days)

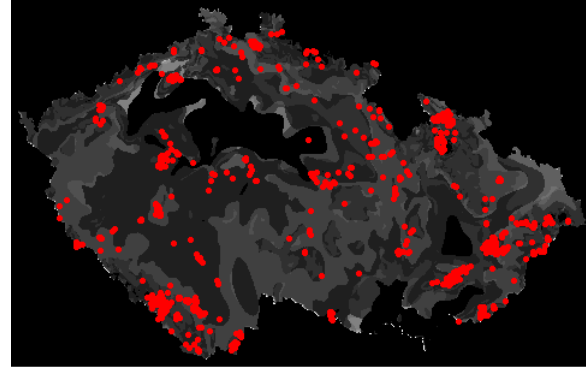
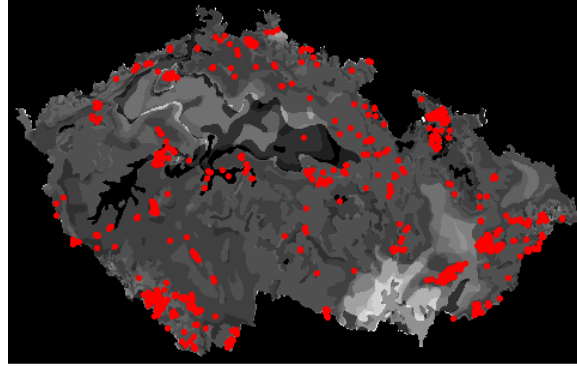
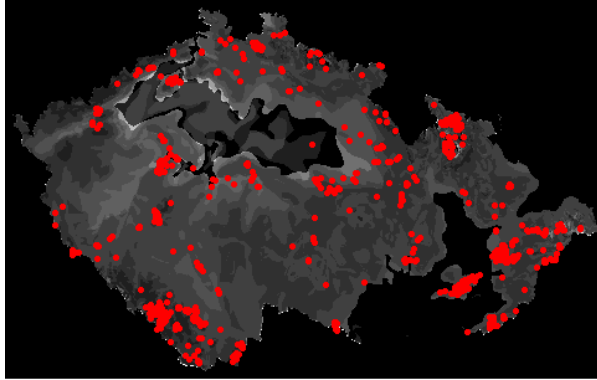
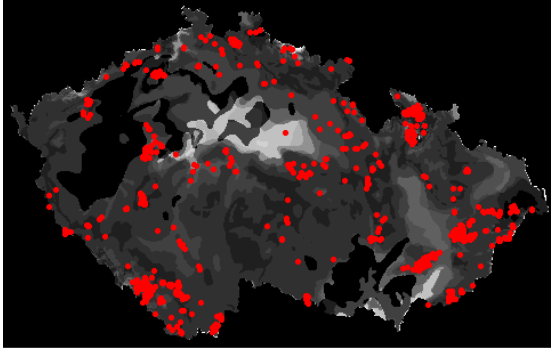
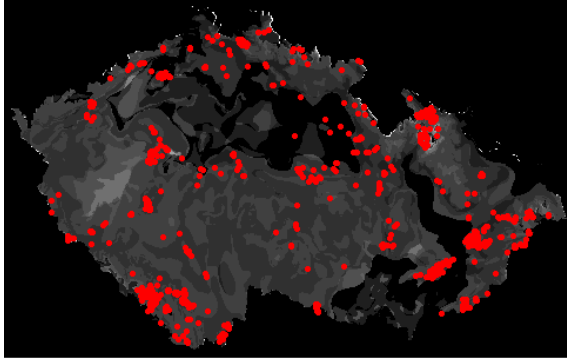


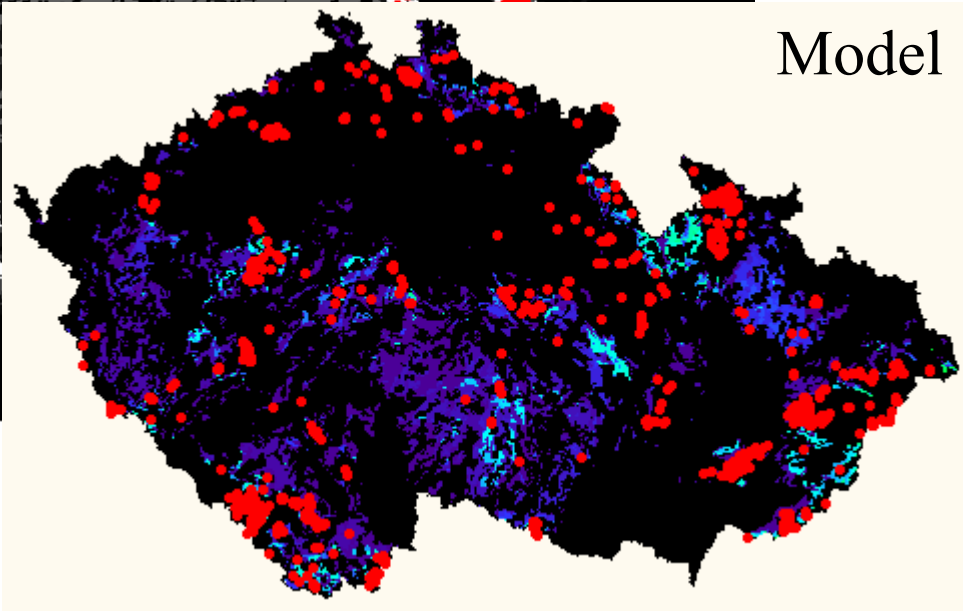
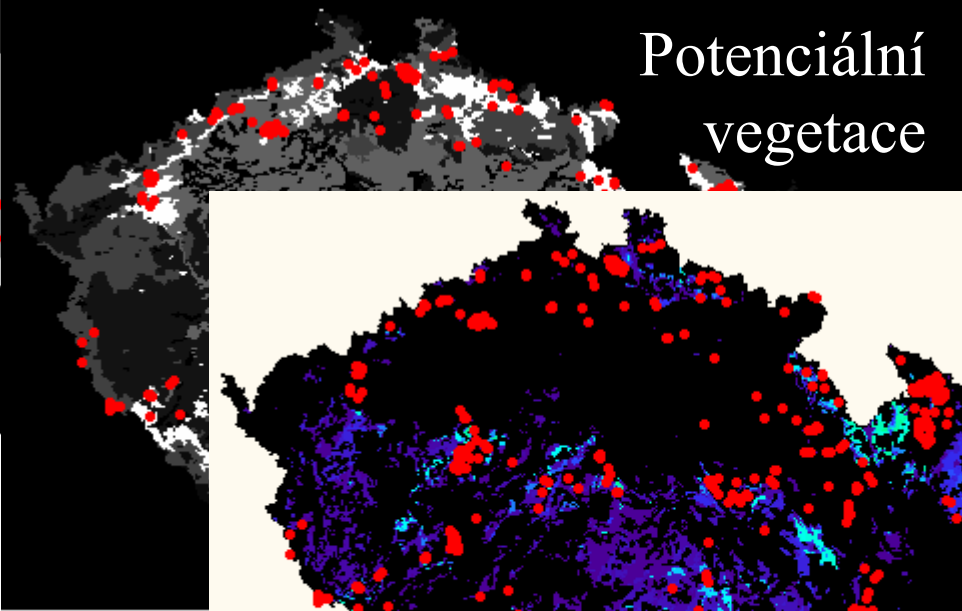
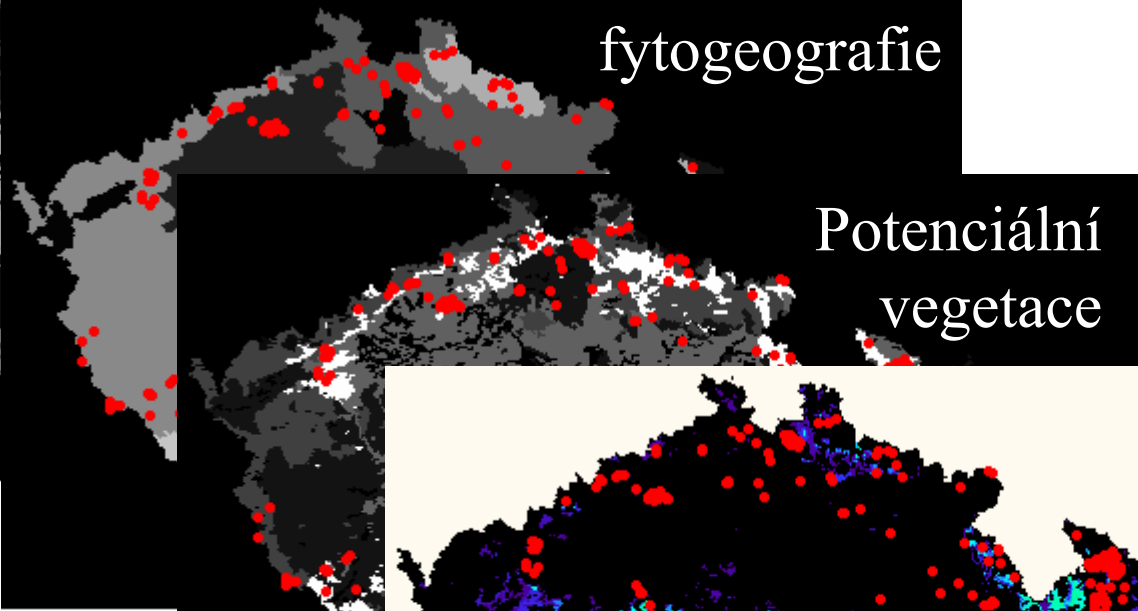
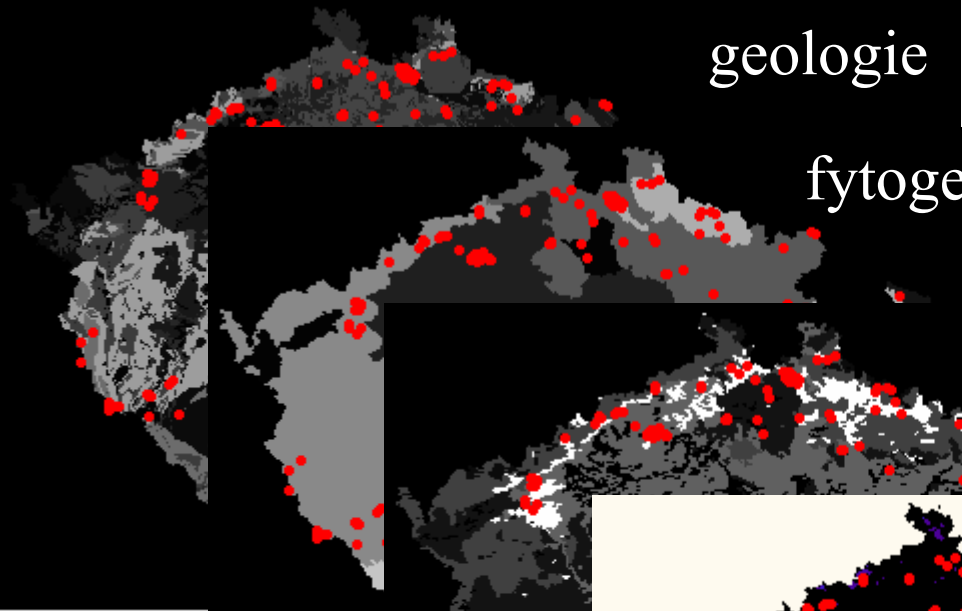
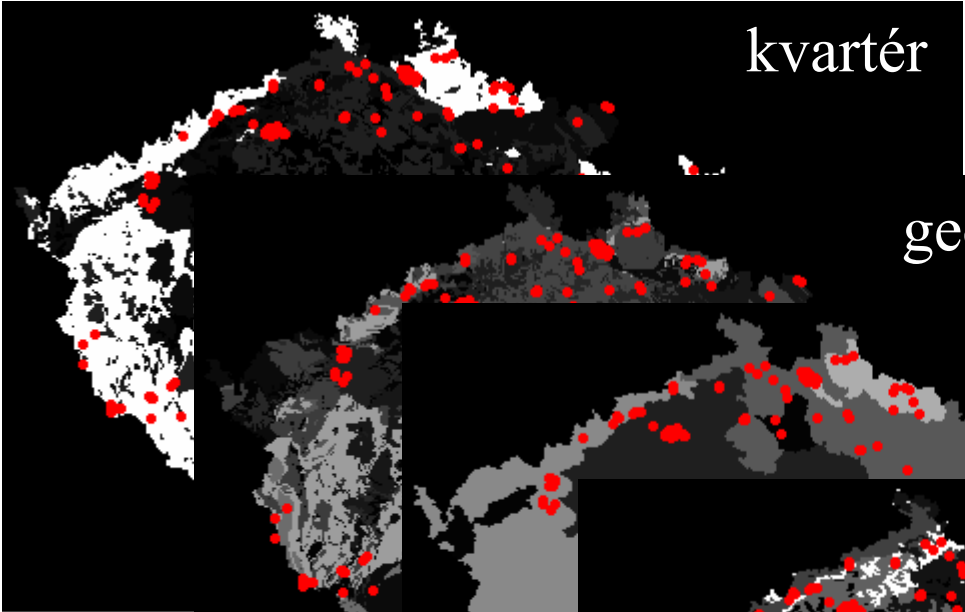
Snow period (days)

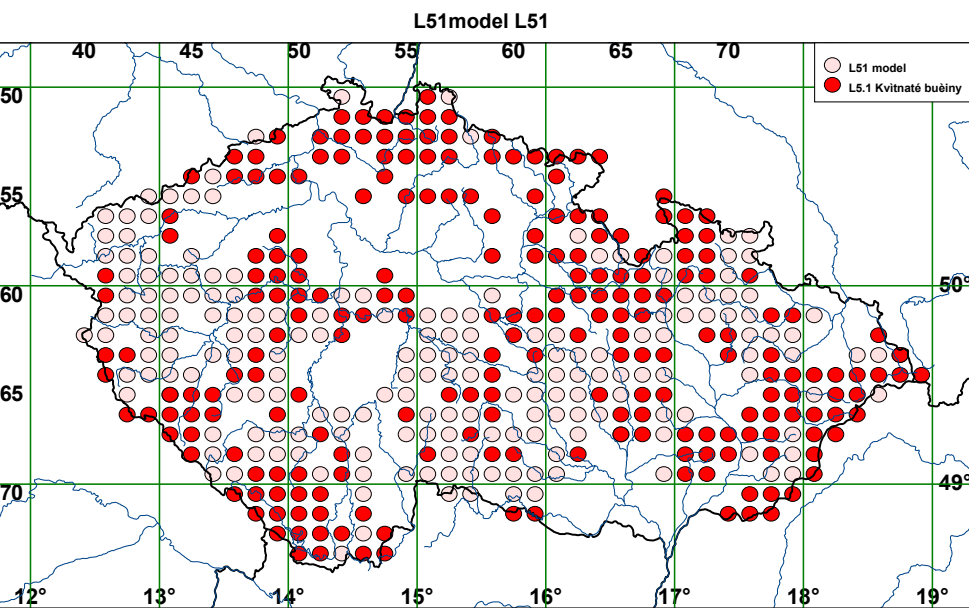
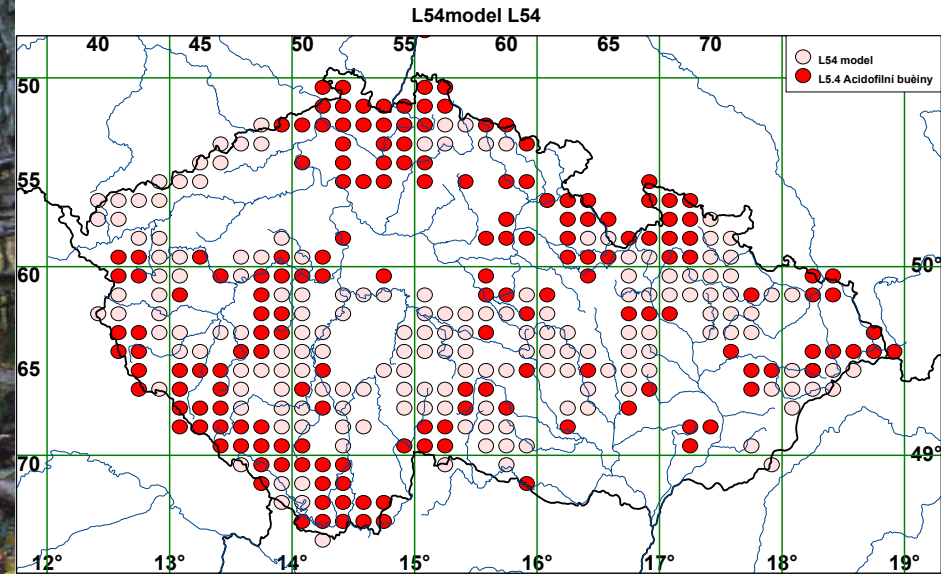


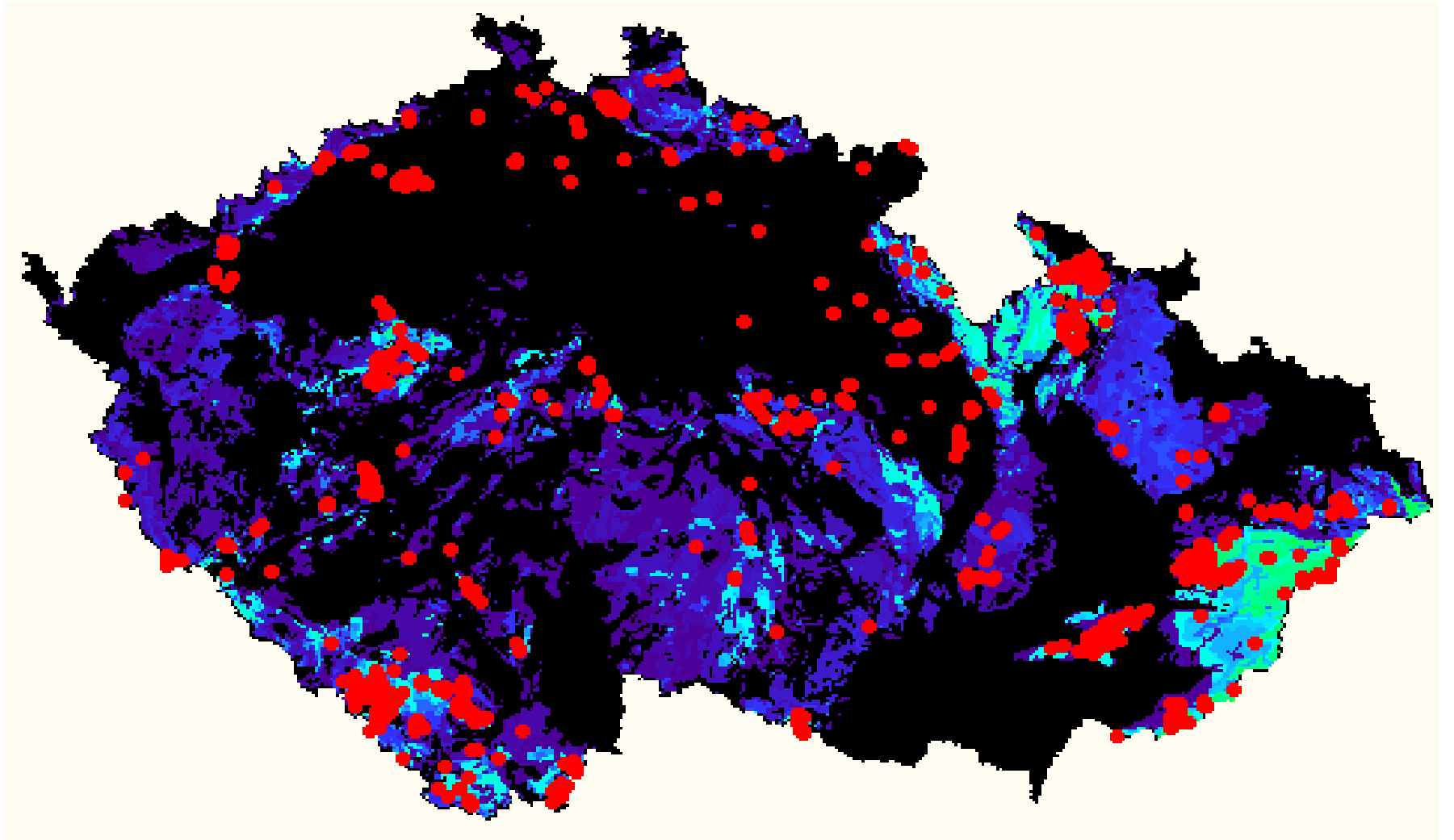
Mean January temperature







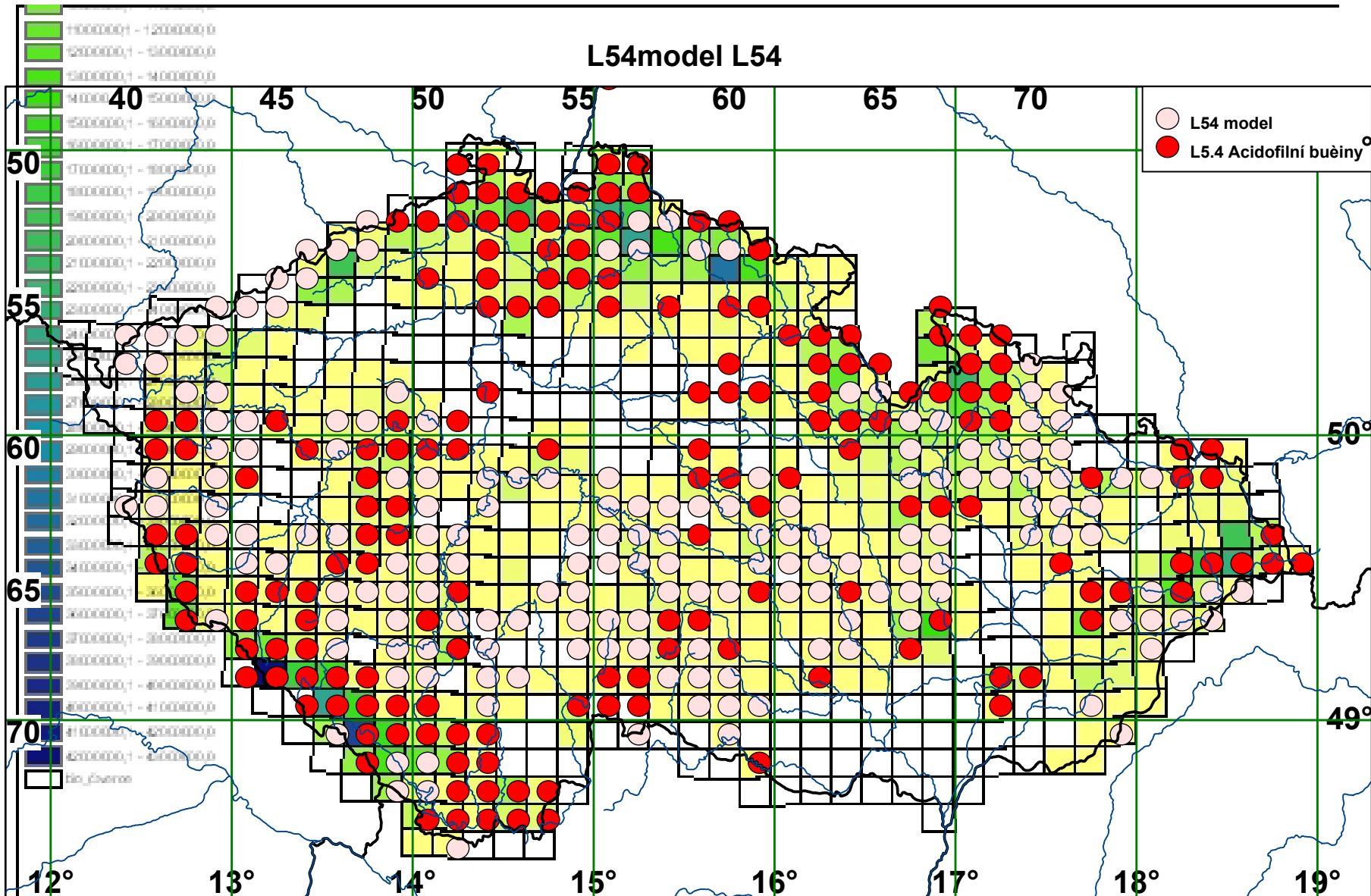




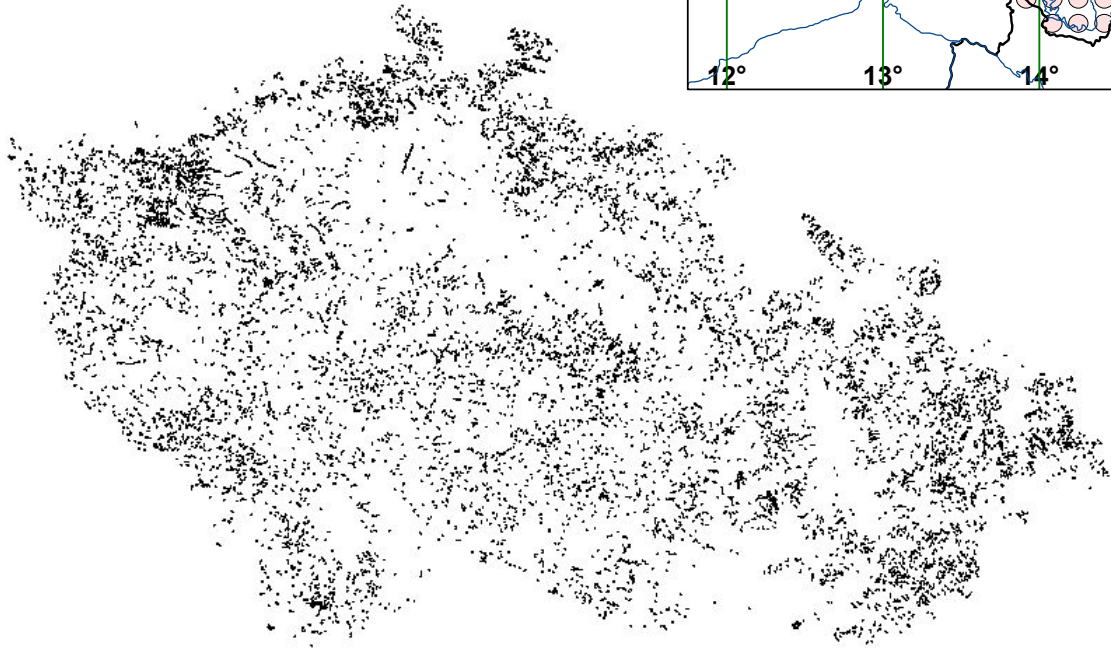
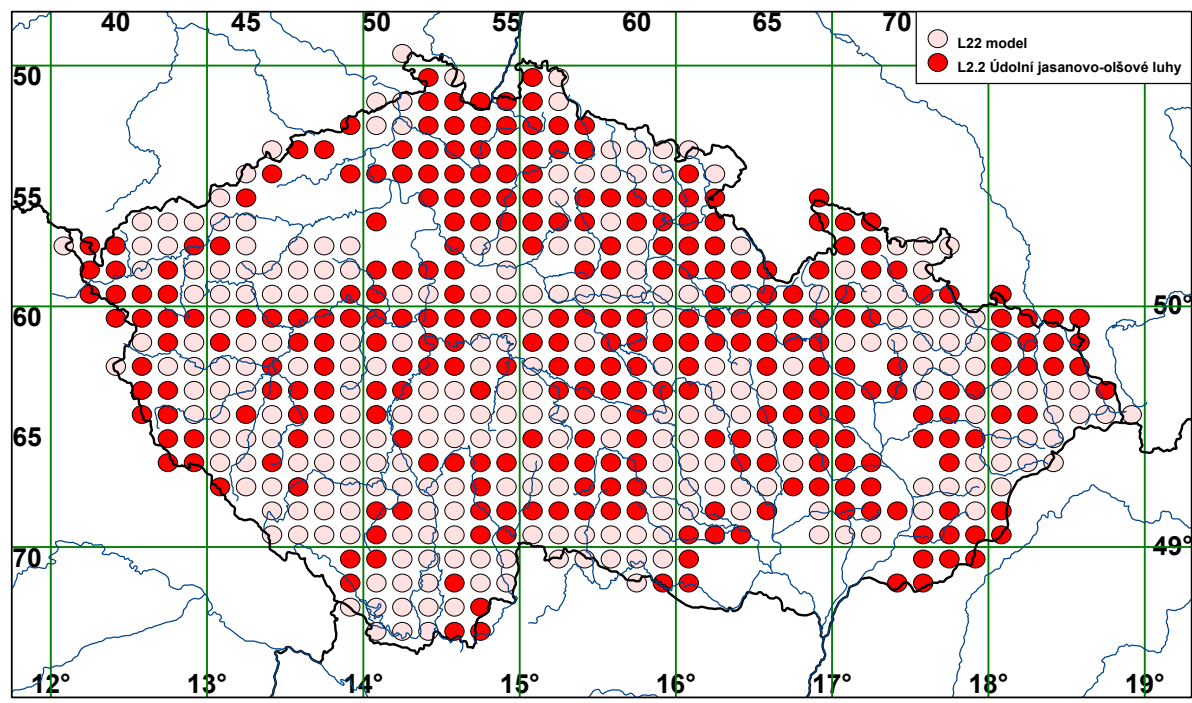




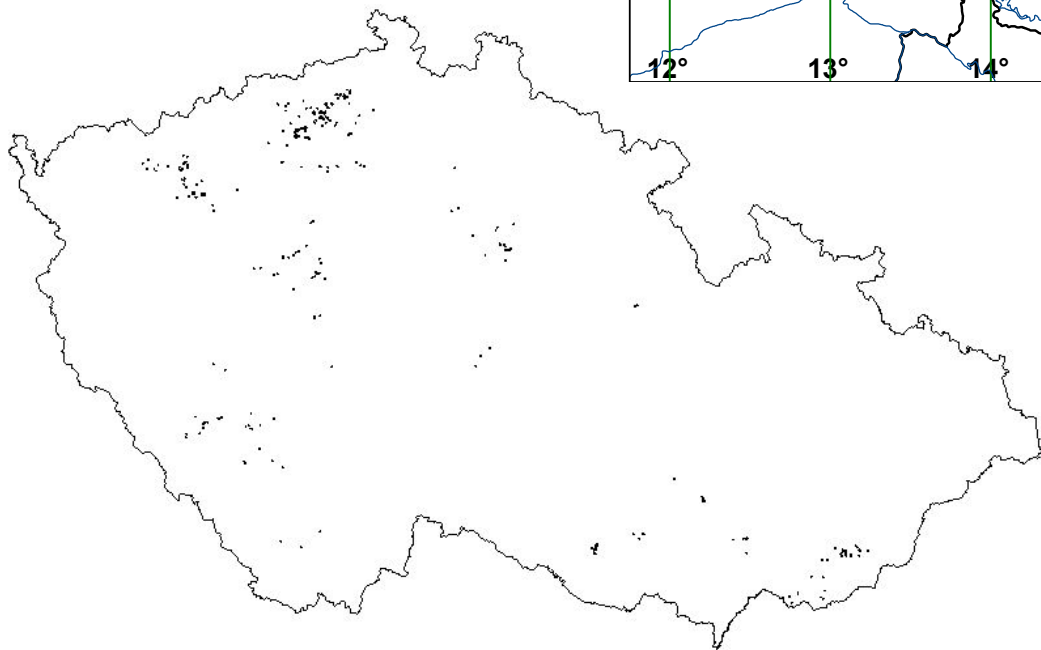
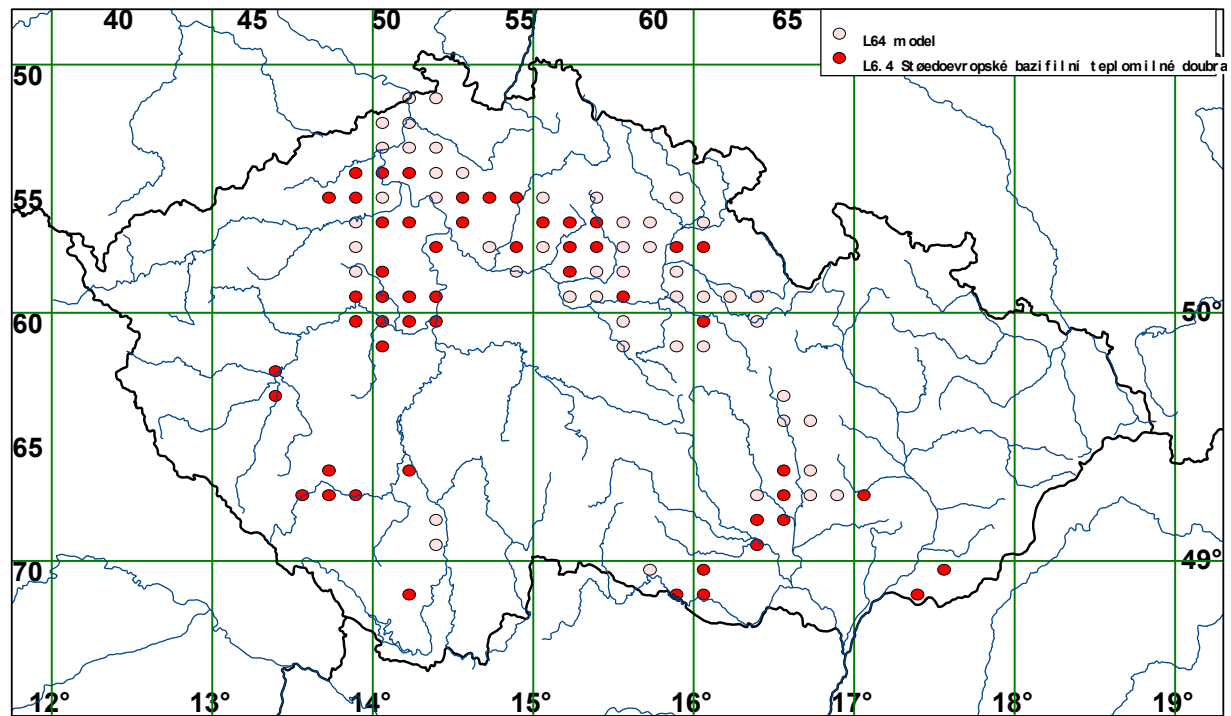
# L54model L54



L22model L22



# L64model L64



M17model M17

